

Airshare XYZ

Monthly update

MARCH - APRIL 2018

Visit the Airshare website here [!\[\]\(919a2cb85b99741a73c0c31a427236a8_img.jpg\)](#)

Airshare XYZ project goal:



ACTIONS - map the mitigating actions used in the participating airports.



EFFECT - assesses the effect of the mitigating actions with the airports.



ENABLING - the best possible wildlife control and reduction.

Status update:

AIRLINES



12 airlines actively participating in the project,



Invitations are sent on behalf of 8 airlines.



We started preparing the individual project overview to each airline.



AIRPORTS



So far 503 airports are invited to participate in the project.



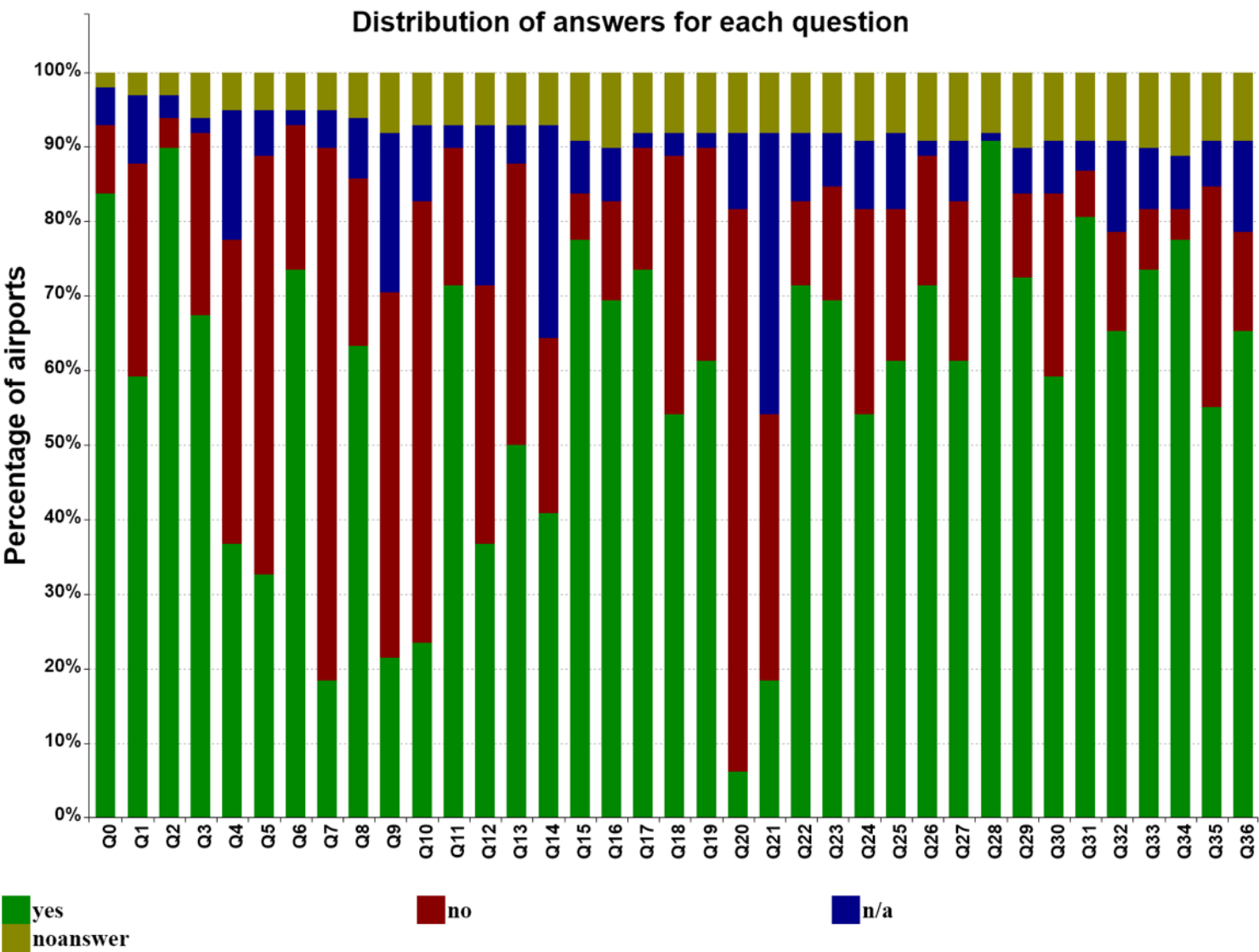
We are ready to invite additional 156 airports as soon as we receive confirmations regarding email templates and relevant contact information at the airports.



Implementation rates

We are starting to look at the average results from participating airports. It is important to highlight that answers or colors representing them do not indicate negative/positive values.

When looking at the implementation rates it becomes clear that most airports are collecting and analyzing data based on the actions of the on airfield bird controllers. As inspiration, we have asked Aalborg airport to describe how they are working with the data.



Active management

- Q0 Is bird control in place prior to every aircraft operation?
- Q1 Are bird control and bird surveillance recorded at least every 30 minutes?
- Q2 Are training and brush-up being performed?
- Q3 Is distress call playback used in the field?
- Q4 Do you trap raptors for a distant release?
- Q5 Are laser pointers used?
- Q6 Are pyrotechnics used?
- Q7 Do you use dog assistance?
- Q8 Is shooting high-risk birds used as a mean of immediate control?

Passive management

- Q9 Do you reseed with endophyte infested grass seeds?
- Q10 Do you use fertilizer to improve grass quality?
- Q11 Do you have a long grass policy in place?
- Q12 Do you use netting of the ditches and water retention ponds?
- Q13 Do you remove grass clippings after lawn mowing?
- Q14 Do you replace ditches with buried drain pipes?
- Q15 Do you remove self-sown trees and shrubs?
- Q16 Do you eliminate temporary surface water?
- Q17 Do you actively manage weed control?
- Q18 Is your airfield used for agricultural crops?
- Q19 Is there any food waste exposed to birds in your airport?

On and off airport surveillance by radar

- Q20 Do you use radar detection of birds?
- Q21 Do you perform historical analysis and risk assessment of recorded radar data?

Off airport (13 km) risk assessment

- Q22 Is registration of all bird attracting sites performed in your airport?
- Q23 Are hazardous birds recorded at sites that attract birds?
- Q24 Do you record hazardous bird flight routes crossing aircraft flightpaths?
- Q25 Do you perform a risk assessment of the 13km zone?

Data recording, analysis, risk assessment, review, and reporting

- Q26 Do you have a Local bird strike committee in place?
- Q27 Is DNA or feather analysis of unidentifiable bird strike victims performed?
- Q28 Is a complete bird strike recording and reporting system established in your airport?
- Q29 Is the Bird Strike Risk Assessment matrix updated?
- Q30 Is a monthly review of Bird Strike Risk Assessment performed?
- Q31 Are immediate actions taken to counter bird species entering the high-risk category?
- Q32 Have you improved written procedures to counter bird species entering the medium risk category?
- Q33 Are bird recordings from bird controller(BC) logs analysed?
- Q34 Are bird control procedures based on BC logs revised annually?

Annual standard check

- Q35 Does your airport have an annual standard check performed by external qualified wildlife supervisor?
- Q36 Are annual standard check recommendations fulfilled?



Continuing to share the knowledge of participating airports and airlines, this month we talked with Thomas Hugo Møller - Quality and Compliance manager for the third biggest airport in Denmark - Aalborg airport. Thomas shared the success story how *Aalborg Airport managed to cut the number of bird strikes down by 50%.*

"Aalborg Airport is a growing civil and military airport in the northern part of Denmark. Situated close to the water, with large meadows and huge areas with flooded pastures in the immediate surroundings managing wildlife is a challenge. Add a rapidly growing Barnacle goose population and you have a problem. So, what were we to do?"

"We started by implementing a strict digital recording of all wildlife movements in the area. This led to a better understanding of the bird behaviour. Due to the digital recording, we were able to map where and when our high-risk species were present and to track their local migration patterns."

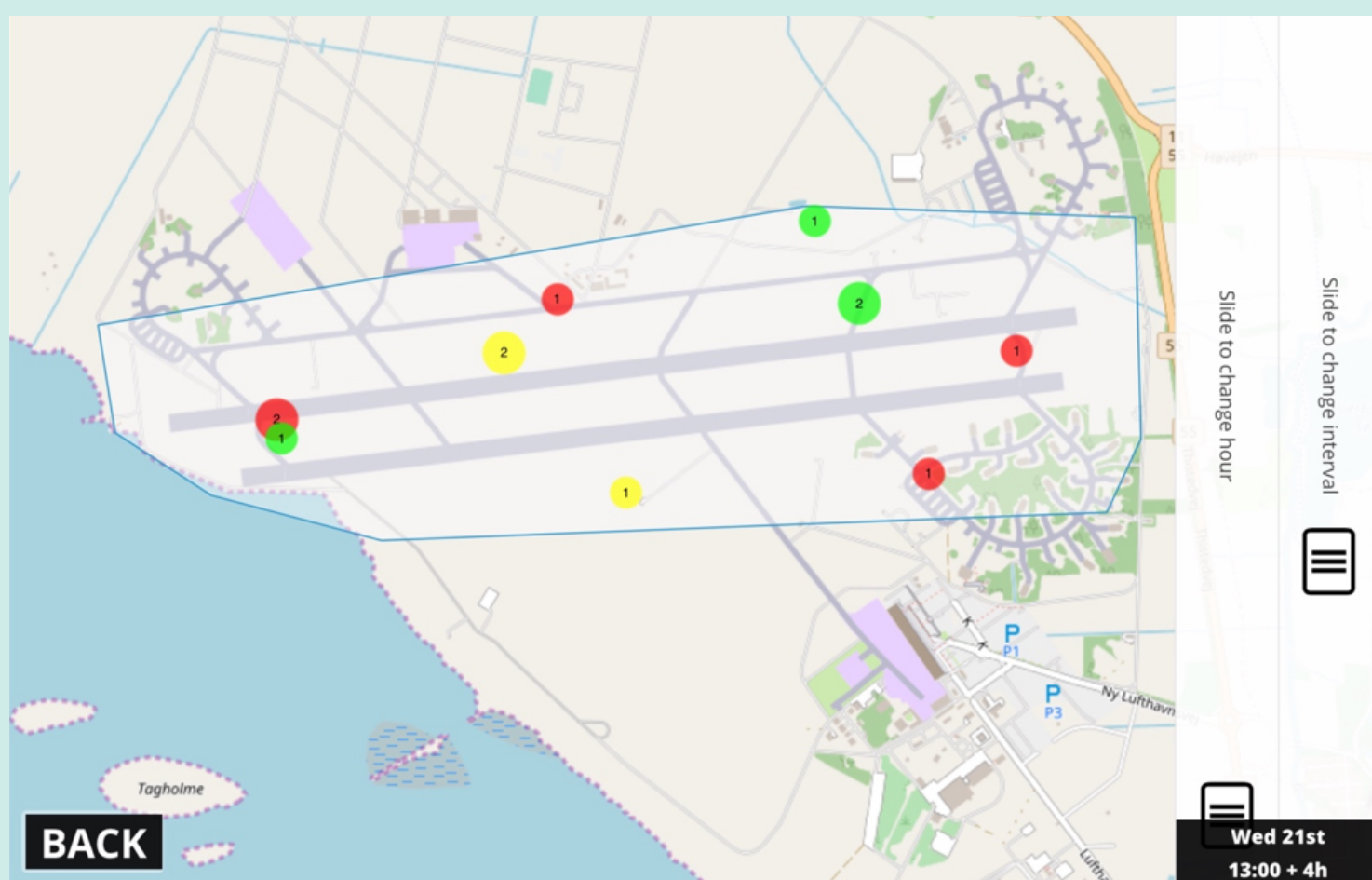


Image from Ascend XYZ digital recording solution, showing wildlife recordings based on wildlife risk level in a 4-hour period on the 21st of February.

[Continue reading the post here](#)



We wish to encourage knowledge sharing between airports and airlines in order to make the sky safer in the most effective ways.

We would like to hear your experiences, challenges, success stories, discussions and share it in our monthly updates.

Please do not hesitate to contact us!

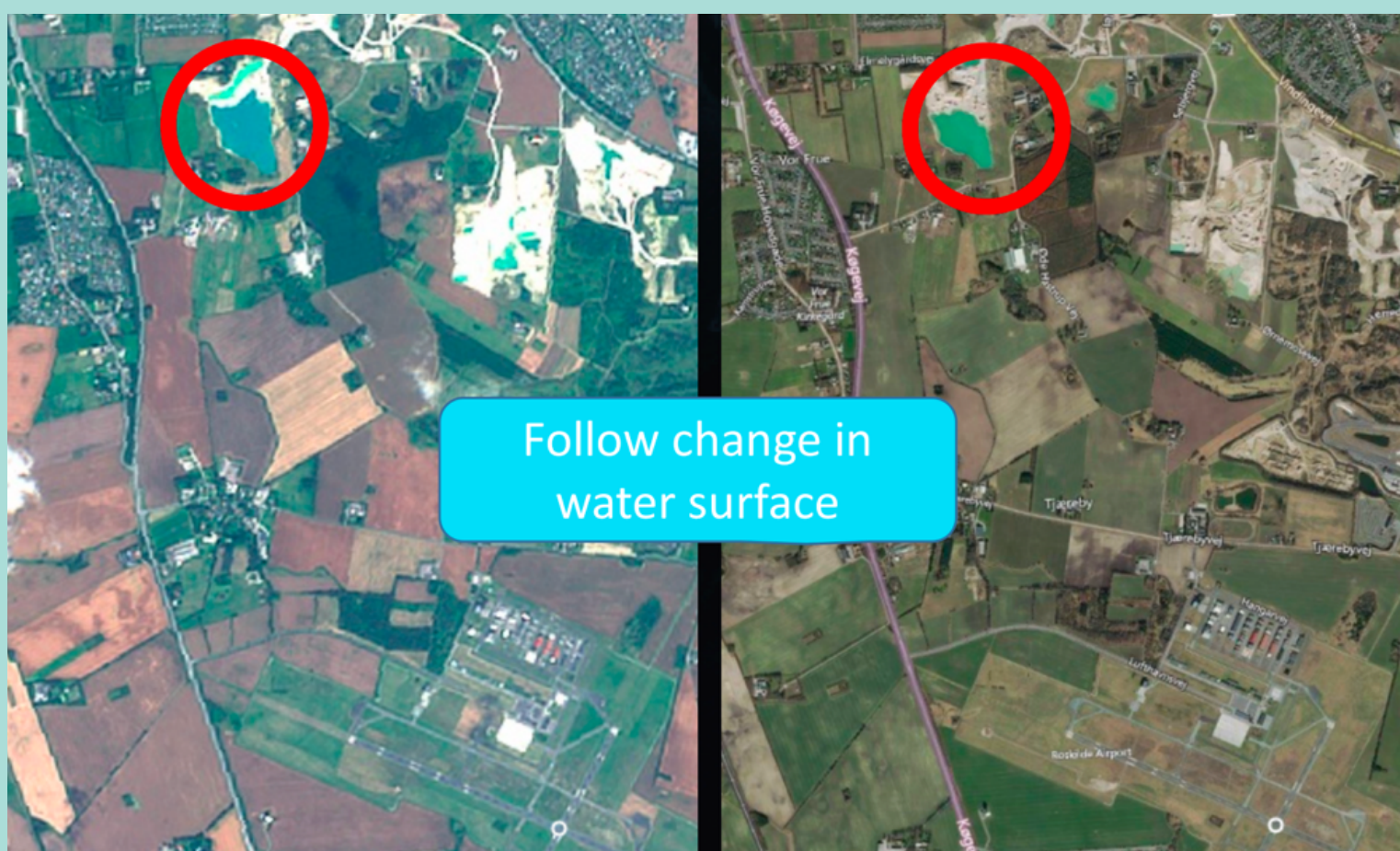
Risks and solutions:

- ! Some airports are cautious to share their information.
 - ✓ In the email invitations we underline that the responses will be available to the airlines and Information will also be used for statistical analysis (but shown anonymously as implementation rates or effect).
- ! Quality assurance.
 - ✓ We implemented a 2-step approval process before sending out email batches to all destinations.
 - ✓ Pre-send report (list of destinations that are going to receive emails, and which type of email they will receive, as well as the text of templates for the final check).
 - ✓ Verification code initiating the actual sending.
- ! Some airports do not answer all the questions.
 - 🔧 We are working on finding a solution.

Would you like to see recent satellite images of your airport surroundings?

We decided to make updated satellite images available to the Airshare XYZ project participants. We would appreciate your feedback. For that reason, we created a 3 min. survey.

Answer the survey here



Follow change in
water surface



Agricultural changes

*We are proud to have you on board in the
Airshare XYZ project and would like to
thank you for your cooperation.*

*If you are considering to join the project -
contact us for more information.*

Best wishes from the Airshare team!



Esromgade 15, 2200 Copenhagen, Denmark



+45 53 88 34 44



airshare-team@ascendxyz.com



<https://ascendxyz.com/airsharexyz/>



Follow us on LinkedIn